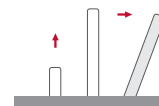


## Dynamic2

HDCP compliant aluminium retractable motorised monitor



### FEATURES

- Vertical motorised monitor with up to 20° inclination
- Patented single engine mechanism for up/down and tilt movements
- Milled aluminium housing with a classic design
- Stainless steel customisable cover plate
- Interactive Setup Display (ISD)
- Maintenance free
- HDCP compliant
- Energy saving design, low consumption video controller
- Serial control and remote diagnosis
- Wireless connectivity for setup and control
- Individual monitor addressing
- Auto Mechanical Movement Calibration (AH-AMMC)

### GENERAL

Arthur Holm Dynamic2 is a motorised retractable product range that provides silent, reliable and harmonic movements by the use of a patented solution with one only engine. This automatic system is equipped with a variable speed system to raise, lower and tilt 20° to ensure the best ergonomics, viewing angle and visibility. We have selected the best possible aluminium finishing specifications in the world, providing the maximum technical and visual performance. Dynamic2 have square edges for a classic look. Dynamic2 are available from 12.1" to 21.5", with 2 DVI-HDCP compliant inputs and equipped with an Interactive Setup Display allowing the control, setup and diagnose of the monitors.

Monitors provide RS-422 I/O allowing the remote control of movements, speed, safety settings, brightness, contrast and backlight. The monitors are equipped with an Auto Mechanical Calibration Movement System. The use of the Arthur Holm's ERT will enable the address configuration of all the monitors installed in a table by simply pressing a button. The AHlink Android and iOS app allows getting the monitor's serial number without removing the unit from the table and allows access to the setup and control menu.

## Display

Size	FULL HD 12.1" TFT Active Matrix, widescreen format. LED backlight
Resolution	1280 (h) x 800 (v)
Brightness	400 cd/m2
Contrast ratio	1000:1
Pixel	0.204 (h) x 0.204 (v) mm
Viewing angle	88°/88° (u/d) / 88°/88° (l/r)
Viewing area	261.12 (h) x 163.2 (v) mm
LED backlight lifespan	50,000 hrs
Response time	Tr 15 ms, Tf 10 ms
Temperature (operating/storage)	Operating 0°C ~+40°C Storage -20°C ~+60°C

## Materials

Monitor housing	Anodised Aluminium
Cover plate	Stainless steel

## Connectivity

Input signal	DVI-I (1 input) – HDCP Compliant DVI-D (1 input) – HDCP Compliant
RJ45 CAT6 (with loop)	Addressable RS422 monitor control by AHnet protocol
GPI (SubD9)	Up/Down control
USB	For service

## Control

RJ45, RS-422 (I/O), AHNet protocol
Addressing
Termination switch
GPI
IR Remote control (monitor adjustments): 1/5

## Movement's Control

User interface on monitor	(Up/Down) Buttons on cover plate
Remote	RS-422 I/O, GPI

## Electrical

External power supply	100-240 Vac, 47/63Hz, 12Vdc
Power consumption	40W

## Accessories

ERT	Ethernet Interface Unit
-----	-------------------------

## Mechanical

### Monitor Dimensions:

Screen	315 x 192.44 x 25 mm [12.4" x 7.6" x 0.98"]
Upper cover plate	412 x 95 x 3 mm [16.22" x 3.74" x 0.12"]
Housing below the table	397 x 590 x 80 mm [15.63" x 23.23" x 3.15"]
Weight	15.8 Kg / 34,8 lbs

### Shipping Dimensions:

Weight	17 Kg / 37.4 lbs
Shipping Box	505 x 185 x 725mm [19,88" x 7.3" x 28.54"]

## OPTIONS

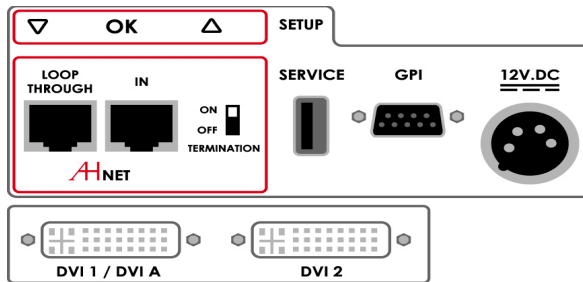
- Laser engraved logo
- UnderCover for veneer
- Underneath installation
- Matte cover plate
- Projected capacitive multi-touch screen
- Built-in camera
- DynamicTalkM
- Synchronised Microphones
- Connectors
- DynamicLoop
- DynamicShare
- Black anodised
- Gold finish
- Bronze finish
- Painted

## CERTIFICATIONS

- CE
- FCC
- IECEE

## WARRANTY

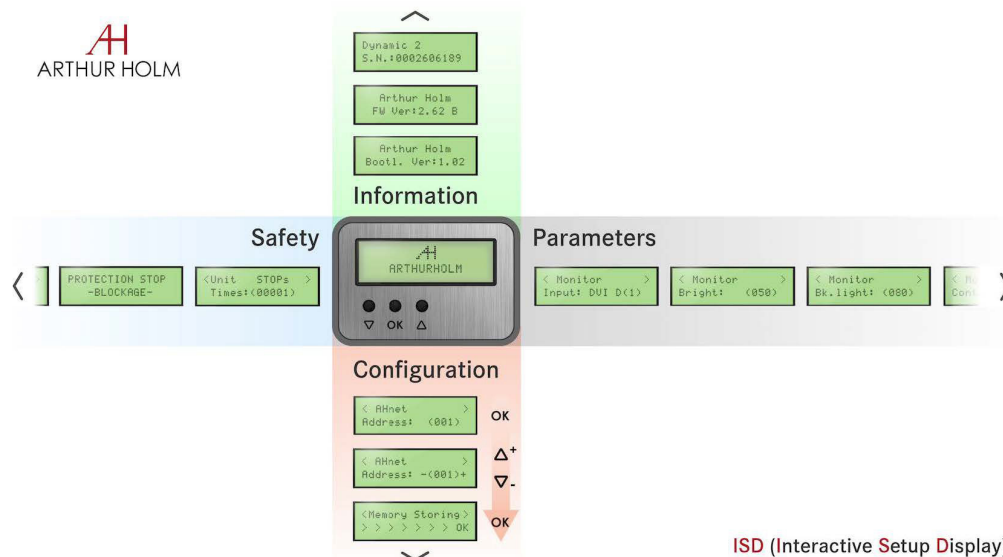
- 5 years limited warranty
- 2 years general warranty



## CONNECTIVITY

- 1- AHnet control interface
- 2- USB for Service
- 3- GPI control
- 4- Power input
- 5- DVI 1 / DVI A video input
- 6- DVI 2 video input

## INTERACTIVE SETUP DISPLAY (ISD)



ISD (Interactive Setup Display)

## CONSULTANTS, ARCHITECTS AND ENGINEERS SPECIFICATIONS

Vertically retractable motorised 12.1" Full HD professional monitor. The monitor housing shall be made of milled anodised aluminium. The monitor shall make the up/down and tilt movements with one only engine. The monitor cover plate shall provide a passive opening system and shall be made of 3 mm brushed stainless steel. The monitor shall have a brightness of 400 cd/m<sup>2</sup>, a contrast ratio of 1000:1 and a backlight lifespan of 50,000 hours. The monitor shall provide 2 DVI HDCP inputs by a licensed HDCP monitor manufacturer.

The monitor shall provide an addressable RS-422 and an easy to read Interactive Setup Display (ISD) to access the safety parameters, the setup of the speeds and the control of the brightness, contrast and backlight. The monitor shall be able to run an autoadjustment program to reset the factory setups. The monitor shall provide a USB port for firmware upgrades. The monitor shall be controlled by a wireless Android and iOS app providing information about the monitor's serial number, and providing access to the control and to the setup menu.

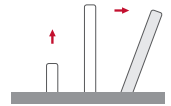
## ARTHUR HOLM

Albiral Display Solutions SL · Fàtima, 25 Sant Hipòlit de Voltregà 08512 Barcelona, Spain · +34 938 502 376 · marketing@arthurholm.com · www.arthurholm.com  
Arthur Holm is a registered brand of Albiral Display Solutions SL. Specifications subject to change without previous notice.

Technology serving Design

## Dynamic2

HDCP compliant aluminium retractable motorised monitor



### FEATURES

- Vertical motorised monitor with up to 20° inclination
- Patented single engine mechanism for up/down and tilt movements
- Milled aluminium housing with a classic design
- Stainless steel customisable cover plate
- Interactive Setup Display (ISD)
- Maintenance free
- HDCP compliant
- Energy saving design, low consumption video controller
- Serial control and remote diagnosis
- Wireless connectivity for setup and control
- Individual monitor addressing
- Auto Mechanical Movement Calibration (AH-AMMC)

### GENERAL

Arthur Holm Dynamic2 is a motorised retractable product range that provides silent, reliable and harmonic movements by the use of a patented solution with one only engine. This automatic system is equipped with a variable speed system to raise, lower and tilt 20° to ensure the best ergonomics, viewing angle and visibility. We have selected the best possible aluminium finishing specifications in the world, providing the maximum technical and visual performance. Dynamic2 have square edges for a contemporary and longstanding look and the screen is protected with an anti-reflective 2 side coating 3 mm black edged glass. Dynamic2 are available from 12.1" to 21.5", with 2 DVI-HDCP

compliant inputs and equipped with an Interactive Setup Display allowing the control, setup and diagnose of the monitors. Monitors provide RS-422 I/O allowing the remote control of movements, speed, safety settings, brightness, contrast and backlight. The monitors are equipped with an Auto Mechanical Calibration Movement System. The use of the Arthur Holm's ERT will enable the address configuration of all the monitors installed in a table by simply pressing a button. The AHlink Android and iOS app allows getting the monitor's serial number without removing the unit from the table and allows access to the setup and control menu.

**Display**

Size	FULL HD 15.6" TFT Active Matrix, widescreen format. LED backlight
Resolution	1920 (h) x 1080 (v)
Brightness	450 cd/m2
Contrast ratio	800:1
Pixel	0.1792 (h) x 0.1792 (v) mm
Viewing angle	85° / 85° (u/d) / 85° 85° (l/r)
Viewing area	344.16 (h) x 193.59 (v)
LED backlight lifespan	50,000 hrs
Response time	Tr + Tf = 25ms
Temperature (operating/storage)	Operating 0°C ~+40°C Storage -20°C ~+60°C

**Materials**

Monitor housing	Anodised Aluminium
Cover plate	Stainless steel

**Connectivity**

Input signal	DVI-I (1 input) – HDCP Compliant - Digital / Analog DVI-D (1 input) – HDCP Compliant - Digital
RJ45 CAT6 (with loop)	Addressable RS422 monitor control by AHnet protocol
GPI (SubD9)	Up/Down control
USB	For service

**Control**

RJ45, RS-422 (I/O), AHNet protocol
Addressing
Termination switch
GPI
IR Remote control (monitor adjustments): 1 / 5

**Movement's Control**

User interface on monitor	(Up/Down) Buttons on cover plate
Remote	RS-422 I/O, GPI

**Electrical**

External power supply	100-240 Vac, 47/63Hz, 12Vdc
Power consumption	40W

**Accessories**

ERT	Ethernet Interface Unit
-----	-------------------------

**Mechanical**
**Monitor Dimensions:**

Screen	403 x 234.16 x 25 mm [15.87" x 9.22" x 0.98"]
Upper cover plate	500 x 95 x 3 mm [19.68" x 3.73" x 0.12"]
Housing below the table	485 x 590 x 80 mm [19.09" x 23.23" x 3.15"]
Weight	19 Kg / 39.4 Lbs

**Shipping Dimensions:**

Weight	18.9 Kg / 41.6 Lbs
Shipping Box	615 x 165 x 705 mm [24.21" x 6.5" x 27.75"]

**OPCIONES**

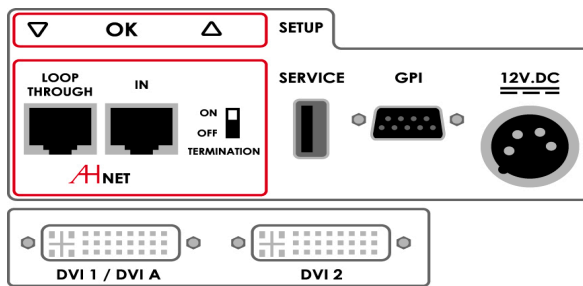
- Laser engraved logo
- UnderCover for veneer
- Underneath installation
- Matte cover plate
- Projected capacitive multi-touch screen
- Built-in camera
- DynamicTalkM
- Synchronised Microphones
- Connectors
- DynamicLoop
- DynamicShare
- Black anodised
- Gold finish
- Bronze finish
- Painted

**CERTIFICATIONS**

- CE
- FCC
- IECEE

**WARRANTY**

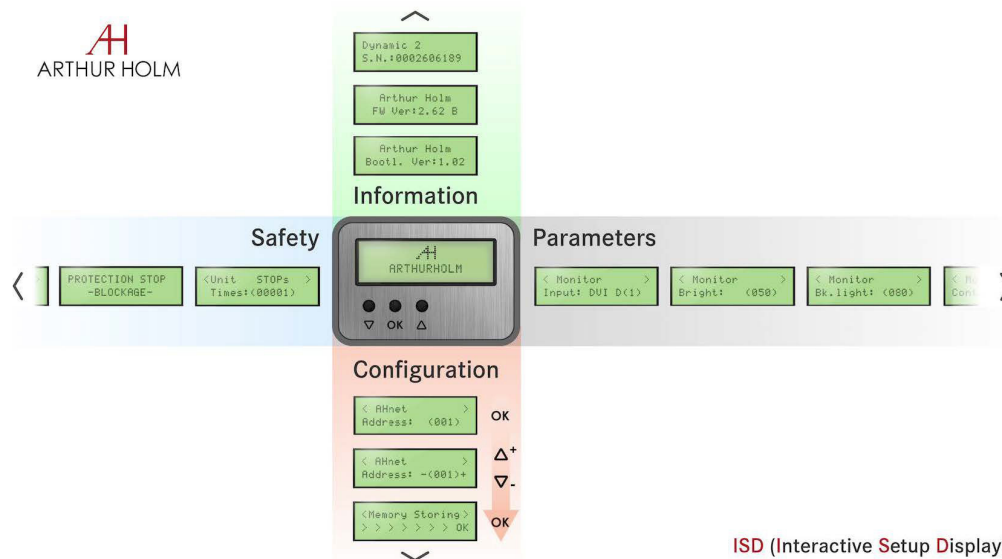
- 5 years limited warranty
- 2 years general warranty



## CONNECTIVITY

- 1- AHnet control interface
- 2- USB for Service
- 3- GPI control
- 4- Power input
- 5- DVI 1 / DVI A video input
- 6- DVI 2 video input

## INTERACTIVE SETUP DISPLAY (ISD)



ISD (Interactive Setup Display)

## CONSULTANTS, ARCHITECTS AND ENGINEERS SPECIFICATIONS

Vertically retractable motorised 15.6" Full HD professional monitor. The monitor housing shall be made of milled anodised aluminium and the screen shall be protected with anti-reflective 2 side coating black edged 3 mm glass. The monitor shall make the up/down and tilt movements with one only engine. The monitor cover plate shall provide a passive opening system and shall be made of 3 mm brushed stainless steel. The monitor shall have a brightness of 450 cd/m<sup>2</sup>, a contrast ratio of 800:1 and a back-light lifespan of 50,000 hours. The monitor shall provide 2 DVI HDCP inputs by a licensed HDCP monitor manufacturer.

The monitor shall provide an addressable RS-422 and an easy to read Interactive Setup Display (ISD) to access the safety parameters, the setup of the speeds and the control of the brightness, contrast and backlight. The monitor shall be able to run an autoadjustment program to reset the factory setups. The monitor shall provide a USB port for firmware upgrades. The monitor shall be controlled by a wireless Android and iOS app providing information about the monitor's serial number, and providing access to the control and to the setup menu.

## ARTHUR HOLM

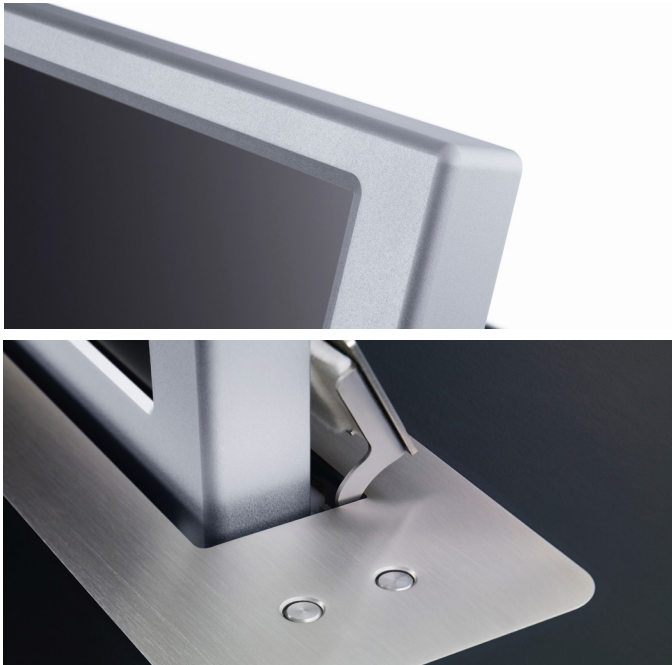
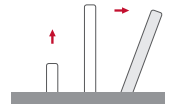
Albiral Display Solutions SL · Fàtima, 25 Sant Hipòlit de Voltregà 08512 Barcelona, Spain · +34 938 502 376 · marketing@arthurholm.com · www.arthurholm.com  
Arthur Holm is a registered brand of Albiral Display Solutions SL. Specifications subject to change without previous notice.

Technology serving Design



## Dynamic2

HDCP compliant aluminium retractable motorised monitor



### FEATURES

- Vertical motorised monitor with up to 20° inclination
- Patented single engine mechanism for up/down and tilt movements
- Milled aluminium housing with a classic design
- Stainless steel customisable cover plate
- Interactive Setup Display (ISD)
- Maintenance free
- HDCP compliant
- Energy saving design, low consumption video controller
- Serial control and remote diagnosis
- Wireless connectivity for setup and control
- Individual monitor addressing
- Auto Mechanical Movement Calibration (AH-AMMC)

### GENERAL

Arthur Holm Dynamic2 is a motorised retractable product range that provides silent, reliable and harmonic movements by the use of a patented solution with one only engine. This automatic system is equipped with a variable speed system to raise, lower and tilt 20° to ensure the best ergonomics, viewing angle and visibility. We have selected the best possible aluminium finishing specifications in the world, providing the maximum technical and visual performance. Dynamic2 have square edges for a classic look. Dynamic2 are available from 12.1" to 21.5", with 2 DVI-HDCP compliant inputs and equipped with an Interactive Setup Display allowing the control, setup and diagnose of the monitors.

Monitors provide RS-422 I/O allowing the remote control of movements, speed, safety settings, brightness, contrast and backlight. The monitors are equipped with an Auto Mechanical Calibration Movement System. The use of the Arthur Holm's ERT will enable the address configuration of all the monitors installed in a table by simply pressing a button. The AHlink Android and iOS app allows getting the monitor's serial number without removing the unit from the table and allows access to the setup and control menu.

**Display**

Size	FULL HD 17.3" TFT Active Matrix, widescreen format. LED backlight
Resolution	1920 (h) x 1080 (v)
Brightness	400 cd/m2
Contrast ratio	600:1
Pixel	0.1989 (h) x 0.1989 (v) mm
Viewing angle	60°/80°(u/d) 80°/80°(l/r)
Viewing area	381.888 (h) x 214.812 (v) mm
LED backlight lifespan	50,000 hrs
Response time	Tr 37ms, Tf 3 ms
Temperature (operating/storage)	Operating 0°C ~+40°C Storage -20°C ~+60°C

**Materials**

Monitor housing	Anodised Aluminium
Cover plate	Stainless steel

**Connectivity**

Input signal	DVI-I (1 input) – HDCP Compliant - Digital / Analog DVI-D (1 input) – HDCP Compliant - Digital
RJ45 CAT6 (with loop)	Addressable RS422 monitor control by AHnet protocol
GPI (SubD9)	Up/Down control
USB	For service

**Control**

RJ45, RS-422 (I/O), AHNet protocol
Addressing
Termination switch
GPI
IR Remote control (monitor adjustments): 1 / 5

**Movement's Control**

User interface on monitor	(Up/Down) Buttons on cover plate
Remote	RS-422 I/O, GPI

**Electrical**

External power supply	100-240 Vac, 47/63Hz, 12Vdc
Power consumption	50W

**Accessories**

ERT	Ethernet Interface Unit
-----	-------------------------

**Mechanical**

Monitor Dimensions:	
Screen	443 x 258 x 25 mm [17.44" x 10.16" x 0.98"]
Upper cover plate	540 x 95 x 3 mm [21.26" x 3.74" x 0.12"]
Housing below the table	525 x 590 x 80 mm [20.66" x 23.22" x 3.15"]
Weight	19.1 Kg / 42.1 Lbs
Shipping Dimensions:	
Weight	20.1 Kg / 44.3 Lbs
Shipping Box	635 x 185 x 725 mm [25" x 7.2" x 28.54"]

**OPTIONS**

- Laser engraved logo
- UnderCover for veneer
- Underneath installation
- Matte cover plate
- Projected capacitive multi-touch screen
- Built-in camera
- DynamicTalkM
- Synchronised Microphones
- Connectors
- DynamicLoop
- DynamicShare
- Black anodised
- Gold finish
- Bronze finish
- Painted

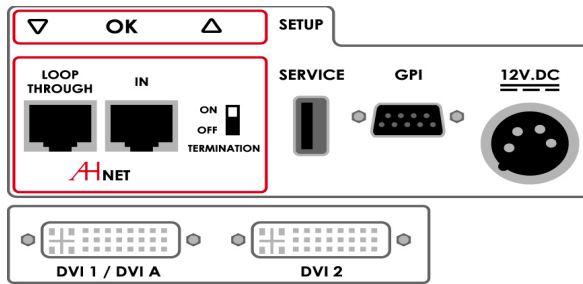
**CERTIFICATIONS**

- CE
- FCC
- IECEE

**WARRANTY**

- 5 years limited warranty
- 2 years general warranty

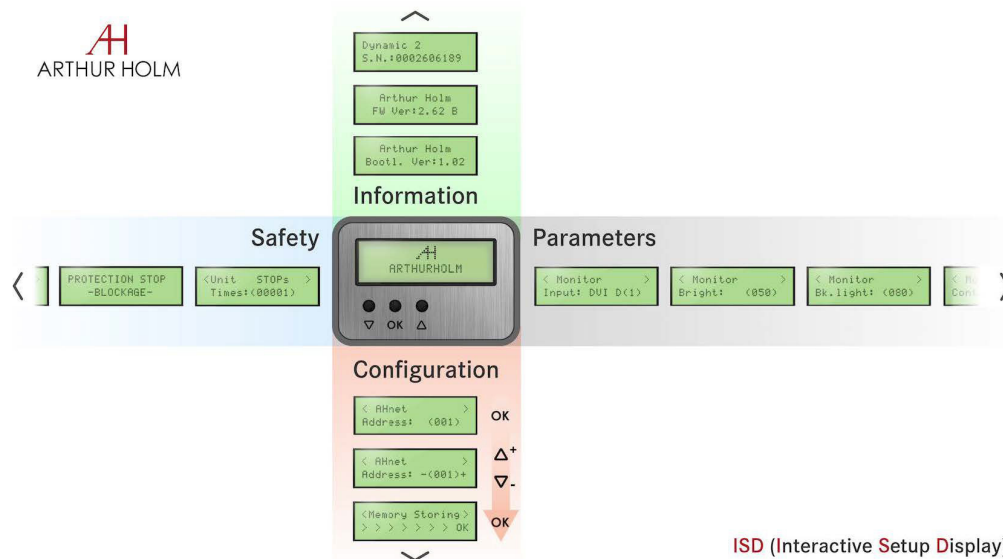




## CONNECTIVITY

- 1- AHnet control interface
- 2- USB for Service
- 3- GPI control
- 4- Power input
- 5- DVI 1 / DVI A video input
- 6- DVI 2 video input

## INTERACTIVE SETUP DISPLAY (ISD)



ISD (Interactive Setup Display)

## CONSULTANTS, ARCHITECTS AND ENGINEERS SPECIFICATIONS

Vertically retractable motorised 17.3" Full HD professional monitor. The monitor housing shall be made of milled anodised aluminium. The monitor shall make the up/down and tilt movements with one only engine. The monitor cover plate shall provide a passive opening system and shall be made of 3 mm brushed stainless steel. The monitor shall have a brightness of 400 cd/m<sup>2</sup>, a contrast ratio of 600:1 and a backlight lifespan of 50,000 hours. The monitor shall provide 2 DVI HDCP inputs by a licensed HDCP monitor manufacturer.

The monitor shall provide an addressable RS-422 and an easy to read Interactive Setup Display (ISD) to access the safety parameters, the setup of the speeds and the control of the brightness, contrast and backlight. The monitor shall be able to run an autoadjustment program to reset the factory setups. The monitor shall provide a USB port for firmware upgrades. The monitor shall be controlled by a wireless Android and iOS app providing information about the monitor's serial number, and providing access to the control and to the setup menu.

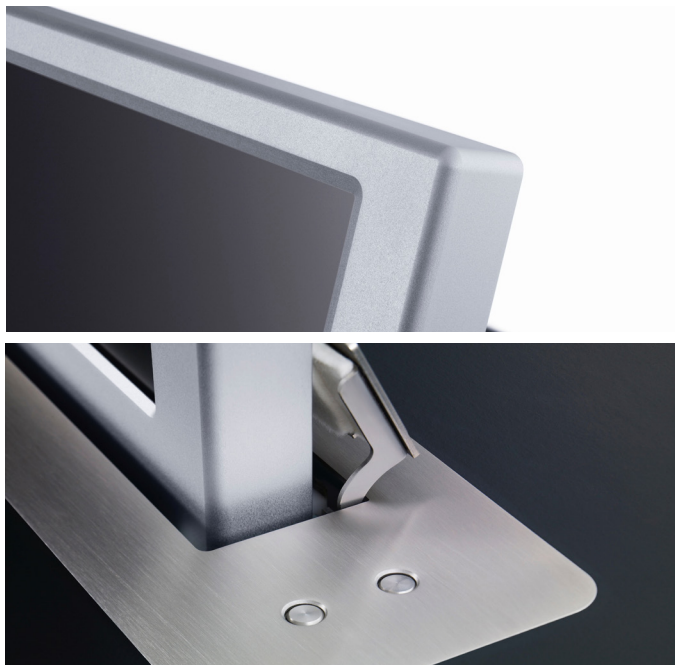
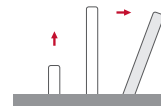
## ARTHUR HOLM

Albiral Display Solutions SL · Fàtima, 25 Sant Hipòlit de Voltregà 08512 Barcelona, Spain · +34 938 502 376 · marketing@arthurholm.com · www.arthurholm.com  
 Arthur Holm is a registered brand of Albiral Display Solutions SL. Specifications subject to change without previous notice.

Technology serving Design

## Dynamic2

HDCP compliant aluminium retractable motorised monitor



### FEATURES

- Vertical motorised monitor with up to 20° inclination
- Patented single engine mechanism for up/down and tilt movements
- Milled aluminium housing with a classic design
- Stainless steel customisable cover plate
- Interactive Setup Display (ISD)
- Maintenance free
- HDCP compliant
- Energy saving design, low consumption video controller
- Serial control and remote diagnosis
- Wireless connectivity for setup and control
- Individual monitor addressing
- Auto Mechanical Movement Calibration (AH-AMMC)

### GENERAL

Arthur Holm Dynamic2 is a motorised retractable product range that provides silent, reliable and harmonic movements by the use of a patented solution with one only engine. This automatic system is equipped with a variable speed system to raise, lower and tilt 20° to ensure the best ergonomics, viewing angle and visibility. We have selected the best possible aluminium finishing specifications in the world, providing the maximum technical and visual performance. Dynamic2 have slightly curved edges for a contemporary and longstanding look and the screen is protected with an anti-reflective 2 side coating 3 mm black edged glass. Dynamic2 are available from 12.1" to 21.5", with 2 DVI-HDCP

compliant inputs and equipped with an Interactive Setup Display allowing the control, setup and diagnose of the monitors. Monitors provide RS-422 I/O allowing the remote control of movements, speed, safety settings, brightness, contrast and backlight. The monitors are equipped with an Auto Mechanical Calibration Movement System. The use of the Arthur Holm's ERT will enable the address configuration of all the monitors installed in a table by simply pressing a button. The AHlink Android and iOS app allows getting the monitor's serial number without removing the unit from the table and allows access to the setup and control menu.

#### ARTHUR HOLM

Albiral Display Solutions SL · Fàtima, 25 Sant Hipòlit de Voltregà 08512 Barcelona, Spain · +34 938 502 376 · [marketing@arthurholm.com](mailto:marketing@arthurholm.com) · [www.arthurholm.com](http://www.arthurholm.com)  
Arthur Holm is a registered brand of Albiral Display Solutions SL. Specifications subject to change without previous notice.

Technology serving Design

**Display**

Size	FULL HD 18.5" TFT Active Matrix, widescreen format. LED backlight
Resolution	1920 (h) x 1080 (v)
Brightness	400 cd/m2
Contrast ratio	1500:1
Pixel	0.213 (h) x 0.213 (v) mm
Viewing angle	85°/85° (u/d) / 85°/85° (l/r)
Viewing area	408.96 (h) x 230.04 (v) mm
LED backlight lifespan	50,000 hrs
Response time	Tr 37ms, Tf 3 ms
Temperature (operating/storage)	Operating 0°C ~+40°C Storage -20°C ~+60°C

**Materials**

Monitor housing	Anodised Aluminium
Cover plate	Stainless steel

**Connectivity**

Input signal	DVI-I (1 input) – HDCP Compliant - Digital / Analog DVI-D (1 input) – HDCP Compliant - Digital
RJ45 CAT6 (with loop)	Addressable RS422 monitor control by AHnet protocol
GPI (SubD9)	Up/Down control
USB	For service

**Control**

RJ45, RS-422 (I/O), AHNet protocol
Addressing
Termination switch
GPI
IR Remote control (monitor adjustments): 1 / 5

**Movement's Control**

User interface on monitor	(Up/Down) Buttons on cover plate
Remote	RS-422 I/O, GPI

**Electrical**

External power supply	100-240 Vac, 47/63Hz, 12Vdc
Power consumption	55W

**Accessories**

ERT	Ethernet Interface Unit
-----	-------------------------

**Mechanical**
**Monitor Dimensions:**

Screen	472 x 271 x 25 mm [18.58" x 10.66" x 0.98"]
Upper cover plate	564 x 95 x 3 mm [22.2" x 3.74" x 0.12"]
Housing below the table	549 x 590 x 80 mm [21.61" x 23.23" x 3.15"]
Weight	20 Kg / 44 Lbs
<b>Shipping Dimensions:</b>	
Weight	21 Kg / 46.2 Lbs
Shipping Box	640 x 165 x 705 mm [25.2" x 6.4" x 27.74"]

**OPTIONS**

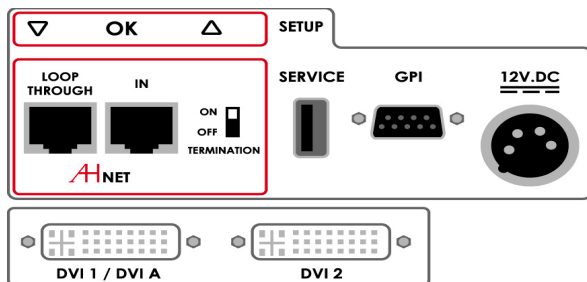
- Laser engraved logo
- UnderCover for veneer
- Underneath installation
- Matte cover plate
- Projected capacitive multi-touch screen
- Built-in camera
- DynamicTalkM
- Synchronised Microphones
- Connectors
- DynamicLoop
- DynamicShare
- Black anodised
- Gold finish
- Bronze finish
- Painted

**CERTIFICATIONS**

- CE
- FCC
- IECEE

**WARRANTY**

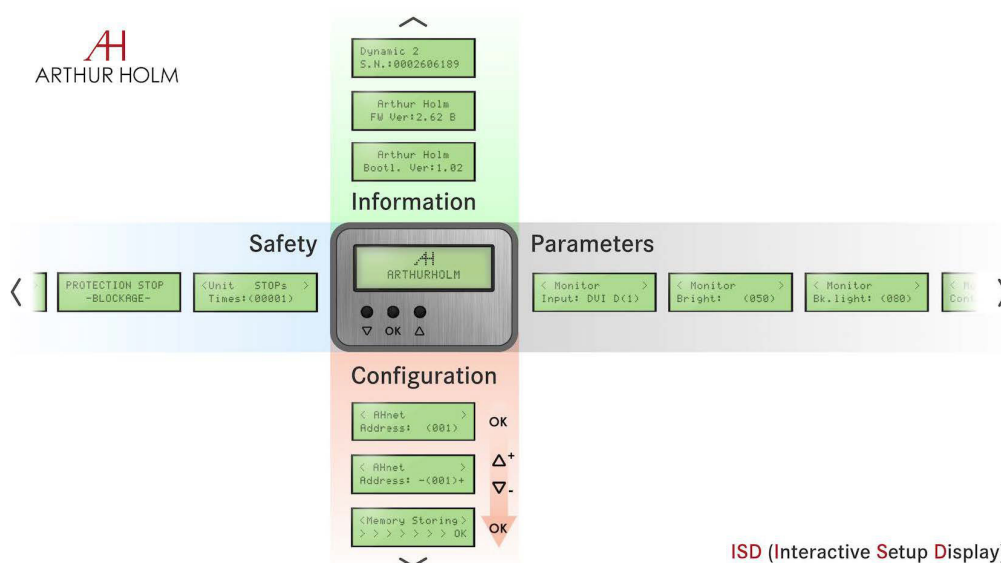
- 5 years limited warranty
- 2 years general warranty



## CONNECTIVITY

- 1- AHnet control interface
- 2- USB for Service
- 3- GPI control
- 4- Power input
- 5- DVI 1 / DVI A video input
- 6- DVI 2 video input

## INTERACTIVE SETUP DISPLAY (ISD)



ISD (Interactive Setup Display)

## CONSULTANTS, ARCHITECTS AND ENGINEERS SPECIFICATIONS

Vertically retractable motorised 18.5" Full HD professional monitor. The monitor housing shall be made of milled anodised aluminium and the screen shall be protected with anti-reflective 2 side coating black edged 3 mm glass. The monitor shall make the up/down and tilt movements with one only engine. The monitor cover plate shall provide a passive opening system and shall be made of 3 mm brushed stainless steel. The monitor shall have a brightness of 400 cd/m2, a contrast ratio of 1500:1 and a backlight lifespan of 50,000 hours. The monitor shall provide 2 DVI HDCP inputs by a licensed HDCP monitor manufacturer.

The monitor shall provide an addressable RS-422 and an easy to read Interactive Setup Display (ISD) to access the safety parameters, the setup of the speeds and the control of the brightness, contrast and backlight. The monitor shall be able to run an autoadjustment program to reset the factory setups. The monitor shall provide a USB port for firmware upgrades. The monitor shall be controlled by a wireless Android and iOS app providing information about the monitor's serial number, and providing access to the control and to the setup menu.

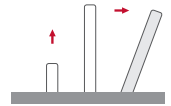
## ARTHUR HOLM

Albiral Display Solutions SL · Fàtima, 25 Sant Hipòlit de Voltregà 08512 Barcelona, Spain · +34 938 502 376 · marketing@arthurholm.com · www.arthurholm.com  
Arthur Holm is a registered brand of Albiral Display Solutions SL. Specifications subject to change without previous notice.

Technology serving Design

## Dynamic2

HDCP compliant aluminium retractable motorised monitor



### FEATURES

- Vertical motorised monitor with up to 20° inclination
- Patented single engine mechanism for up/down and tilt movements
- Milled aluminium housing with a classic design
- Stainless steel customisable cover plate
- Interactive Setup Display (ISD)
- Maintenance free
- HDCP compliant
- Energy saving design, low consumption video controller
- Serial control and remote diagnosis
- Wireless connectivity for setup and control
- Individual monitor addressing
- Auto Mechanical Movement Calibration (AH-AMMC)

### GENERAL

Arthur Holm Dynamic2 is a motorised retractable product range that provides silent, reliable and harmonic movements by the use of a patented solution with one only engine. This automatic system is equipped with a variable speed system to raise, lower and tilt 20° to ensure the best ergonomics, viewing angle and visibility. We have selected the best possible aluminium finishing specifications in the world, providing the maximum technical and visual performance. Dynamic2 have slightly curved edges for a contemporary and longstanding look and the screen is protected with an anti-reflective 2 side coating 3 mm black edged glass. Dynamic2 are available from 12.1" to 21.5", with 2 DVI-HDCP

compliant inputs and equipped with an Interactive Setup Display allowing the control, setup and diagnose of the monitors. Monitors provide RS-422 I/O allowing the remote control of movements, speed, safety settings, brightness, contrast and backlight. The monitors are equipped with an Auto Mechanical Calibration Movement System. The use of the Arthur Holm's ERT will enable the address configuration of all the monitors installed in a table by simply pressing a button. The AHlink Android and iOS app allows getting the monitor's serial number without removing the unit from the table and allows access to the setup and control menu.

**Display**

Size	FULL HD 21.5" TFT Active Matrix, widescreen format. LED backlight
Resolution	1920 (h) x 1080 (v)
Brightness	350 cd/m2
Contrast ratio	1000:1
Pixel	0.24975 (h) x 0.24975 (v) mm
Viewing angle	89° / 89° (L/R) / 89° / 89° (U/D)
Viewing area	476.064 (h) x 267.786 (v)
LED backlight lifespan	50,000 hrs
Response time	Tr 12ms, Tf 10ms
Temperature (operating/storage)	Operating 0°C ~+40°C Storage -20°C ~+60°C

**Materials**

Monitor housing	Anodised Aluminium
Cover plate	Stainless steel

**Connectivity**

Input signal	DVI-I (1 input) – HDCP Compliant - Digital / Analog DVI-D (1 input) – HDCP Compliant - Digital
RJ45 CAT6 (with loop)	Addressable RS422 monitor control by AHnet protocol
GPI (SubD9)	Up/Down control
USB	For service

**Control**

RJ45, RS-422 (I/O), AHNet protocol
Addressing
Termination switch
GPI
IR Remote control (monitor adjustments): 1 / 5

**Movement's Control**

User interface on monitor	(Up/Down) Buttons on cover plate
Remote	RS-422 I/O, GPI

**Electrical**

External power supply	100-240 Vac, 47/63Hz, 12Vdc
Power consumption	70W

**Accessories**

ERT	Ethernet Interface Unit
-----	-------------------------

**Mechanical**
**Monitor Dimensions:**

Screen	538 x 304 x 25 mm [21.21" x 11.97" x 0.98"]
Upper cover plate	636 x 95 x 3 mm [25.03" x 3.73" x 0.12"]
Housing below the table	621 x 590 x 80 mm [24.45" x 23.23" x 3.15"]
Weight	21.2 Kg / 46.7 Lbs
<b>Shipping Dimensions:</b>	
Weight	22.2 Kg / 48.9 Lbs
Shipping Box	715 x 165 x 705 mm [28.15" x 6.4" x 27.74"]

**OPTIONS**

- Laser engraved logo
- UnderCover for veneer
- Underneath installation
- Matte cover plate
- Projected capacitive multi-touch screen
- Built-in camera
- DynamicTalkM
- Synchronised Microphones
- Connectors
- DynamicLoop
- DynamicShare
- Black anodised
- Gold finish
- Bronze finish
- Painted

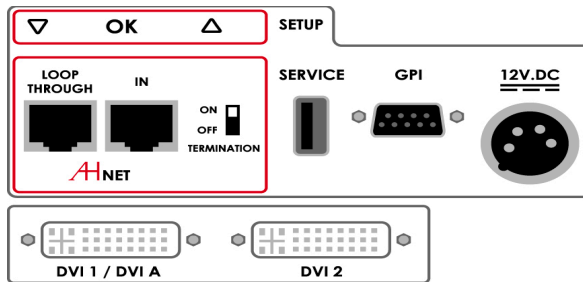
**CERTIFICATIONS**

- CE
- FCC
- IECEE

**WARRANTY**

- 5 years limited warranty
- 2 years general warranty

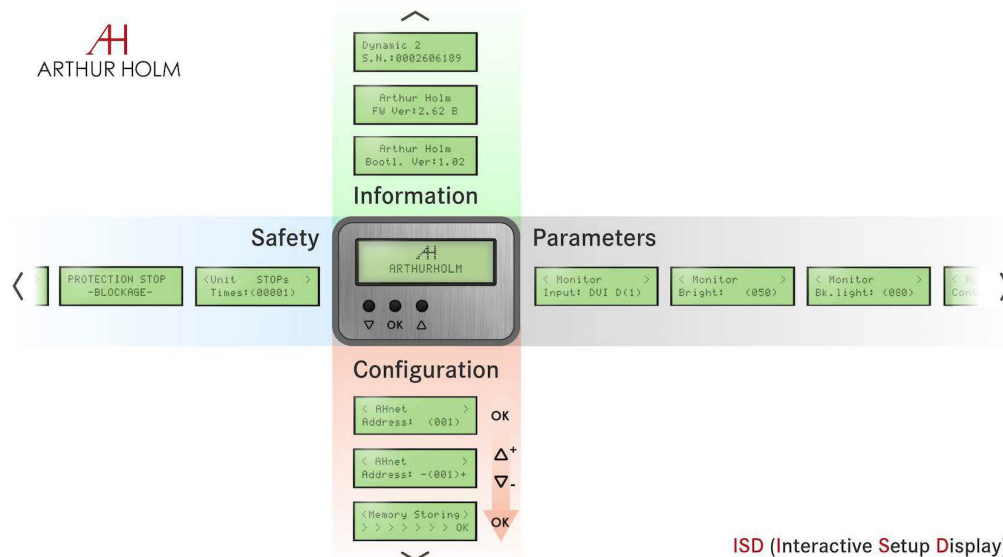




## CONNECTIVITY

- 1- AHnet control interface
- 2- USB for Service
- 3- GPI control
- 4- Power input
- 5- DVI 1 / DVI A video input
- 6- DVI 2 video input

## INTERACTIVE SETUP DISPLAY (ISD)



ISD (Interactive Setup Display)

## CONSULTANTS, ARCHITECTS AND ENGINEERS SPECIFICATIONS

Vertically retractable motorised 21.5" Full HD professional monitor. The monitor housing shall be made of milled anodised aluminium and the screen shall be protected with anti-reflective 2 side coating black edged 3 mm glass. The monitor shall make the up/down and tilt movements with one only engine. The monitor cover plate shall provide a passive opening system and shall be made of 3 mm brushed stainless steel. The monitor shall have a brightness of 350 cd/m<sup>2</sup>, a contrast ratio of 1000:1 and a backlight lifespan of 50,000 hours. The monitor shall provide 2 DVI HDCP inputs by a licensed HDCP monitor manufacturer.

The monitor shall provide an addressable RS-422 and an easy to read Interactive Setup Display (ISD) to access the safety parameters, the setup of the speeds and the control of the brightness, contrast and backlight. The monitor shall be able to run an autoadjustment program to reset the factory setups. The monitor shall provide a USB port for firmware upgrades. The monitor shall be controlled by a wireless Android and iOS app providing information about the monitor's serial number, and providing access to the control and to the setup menu.

## ARTHUR HOLM

Albiral Display Solutions SL · Fàtima, 25 Sant Hipòlit de Voltregà 08512 Barcelona, Spain · +34 938 502 376 · marketing@arthurholm.com · www.arthurholm.com  
Arthur Holm is a registered brand of Albiral Display Solutions SL. Specifications subject to change without previous notice.

Technology serving Design