

DynamicCL

Motorized camera lift for 360° camera
(Camera not included)



Highlights

- Motorized lift for 360° camera
- Integrated camera power and cable for laptop connectivity
- RS-422/RS-485 Full Duplex for remote control
- Brushed stainless steel cover plate

General

The DynamicCL is a motorized camera lift system for tabletop 360° cameras that has been designed to hide table cameras when not in use. Table cameras often cover all the people at the table and are therefore located in a central position on the table.

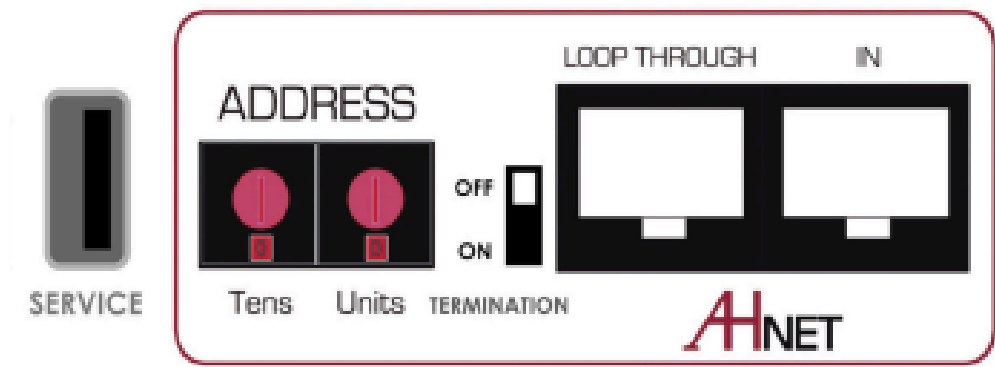
The up and down movement can be controlled remotely via RS-422 / RS-485 Full Duplex or locally on the device via a capacitive touch button.

The DynamicCL has the well-known Arthur Holm build quality with a smooth and almost silent movement of the camera. It has a brushed stainless steel cover plate with a capacitive touch button to control the movement of the device.

ARTHUR HOLM

Albiral Display Solutions SL · Fàtima, 25 Sant Hipòlit de Voltregà 08512 Barcelona, Spain · +34 938 502 376 · marketing@arthurholm.com · www.arthurholm.com
Arthur Holm is a registered brand of Albiral Display Solutions SL. Specifications subject to change without previous notice.

Make Your Meetings Count!



Technical Specifications

Materials

Brushed stainless steel, Steel, Aluminium, Nylon

Finishing Materials

Cover plate in brushed stainless steel / option mat black / white

Black housing

Connectivity

USB Port for software update

XLR-4 input power

Motor Control

Control Up/Down	Capacitive touch control sensor on cover plate
RJ45 CAT6	Addressable RS422 control by AHnet protocol

Electrical

External power supply	100-240 Vac, 50/60Hz. 12VdC
Power consumption	30W

Dimensions

Upper cover plate	Ø 228 x 3 mm [8.98" x 0.12"]
Housing below the table	514.50 x 174 mm x 152 mm [20.26" x 6.85" x 5.98]

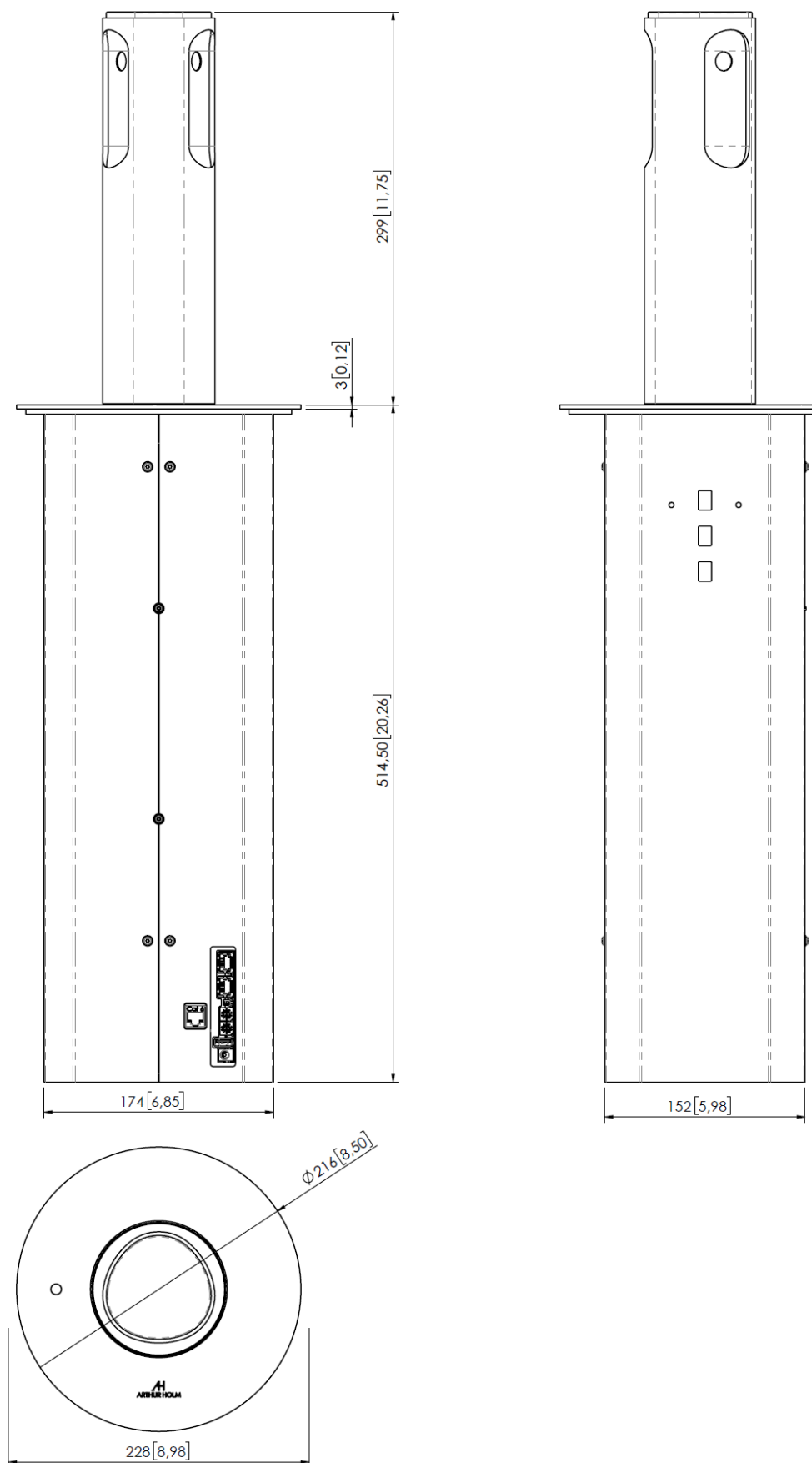
Certifications

- CE

Consultants, architects and engineers specifications

The motorized camera lift system shall retract the camera when not in use. The movements of the motorized camera lift shall be controlled remotely via RS-422/RS-485 Full Duplex or locally on the device via a capacitive touch button.

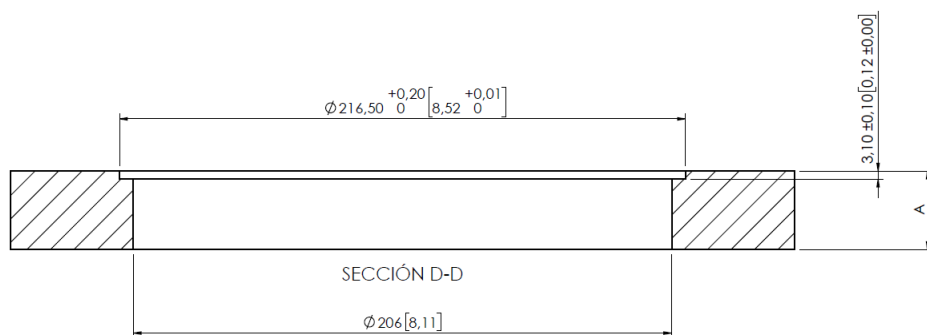
The lift shall provide a brushed stainless steel cover plate with a capacitive touch button to control the up and down motion.



ARTHUR HOLM

Albiral Display Solutions SL · Fàtima, 25 Sant Hipòlit de Voltregà 08512 Barcelona, Spain · +34 938 502 376 · marketing@arthurholm.com · www.arthurholm.com
Arthur Holm is a registered brand of Albiral Display Solutions SL. Specifications subject to change without previous notice.

Make Your Meetings Count!



A= FROM 11 [0,43] TO 75 [2,95]

